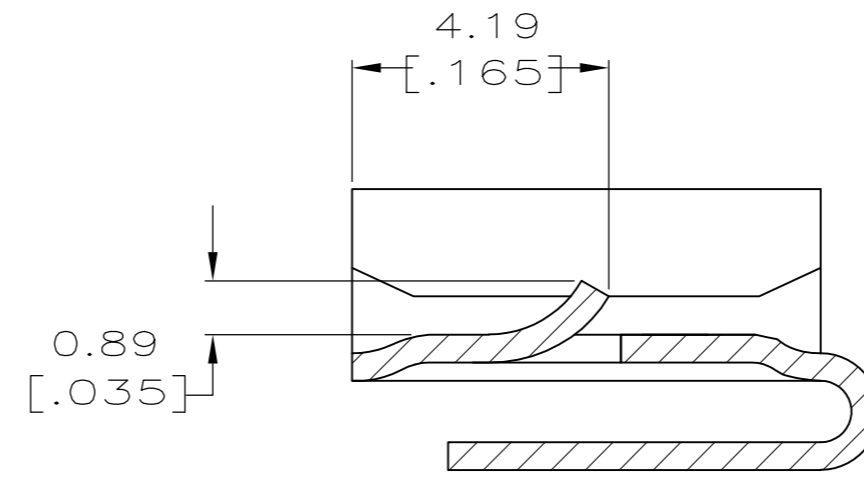
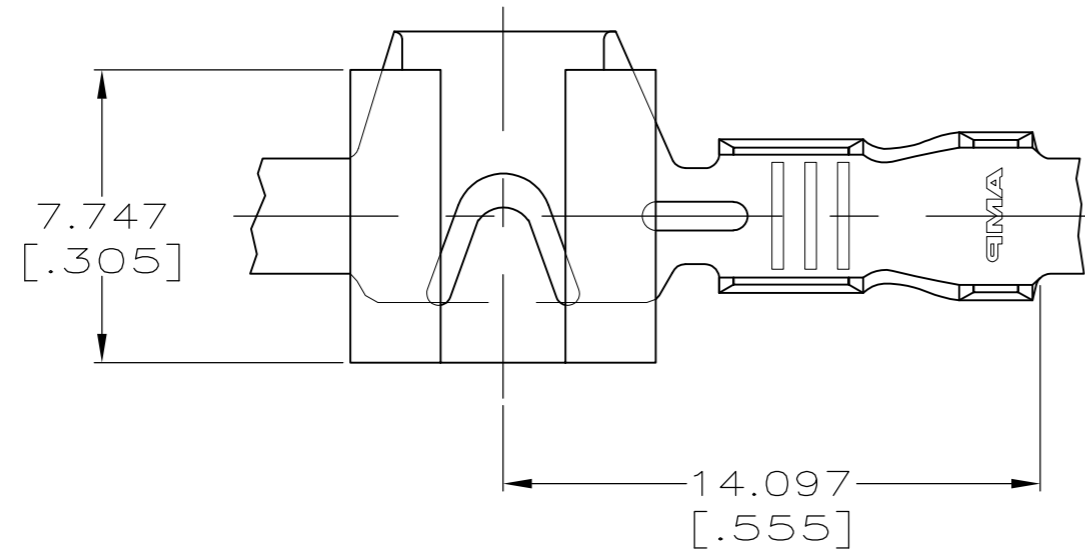


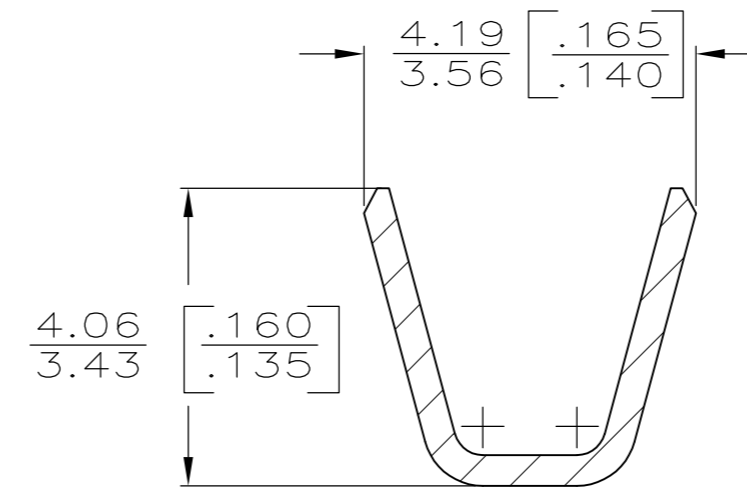
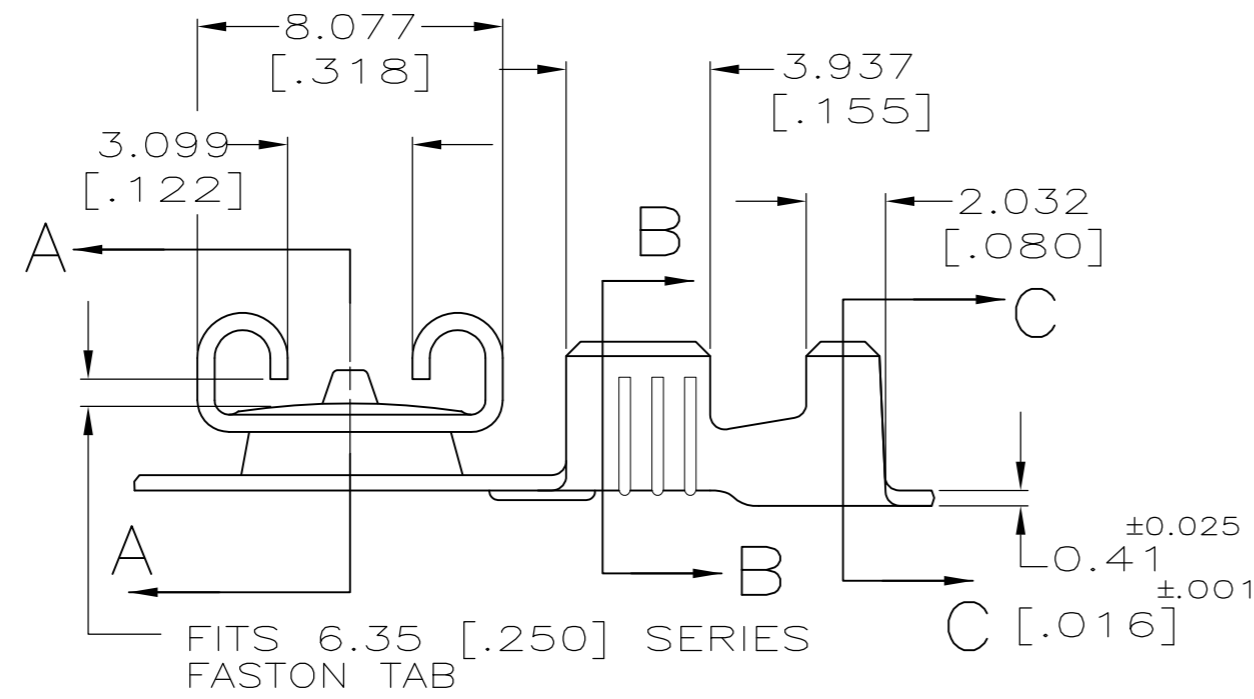
THIS DRAWING IS UNPUBLISHED. RELEASED FOR PUBLICATION
 © COPYRIGHT - By - ALL RIGHTS RESERVED.

LOC		DIST		REVISIONS			
P	LTR	DESCRIPTION		DATE	DWN	APVD	
AF	50	F		REVISED PER ECR-12-013518	23NOV2012	KH	PD

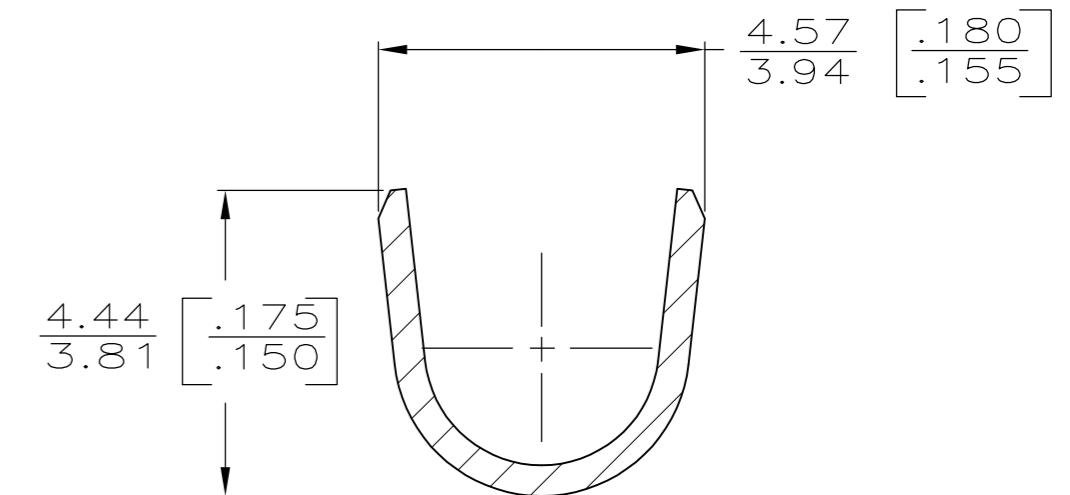
1 CONTINUOUS STRIP ON REELS.



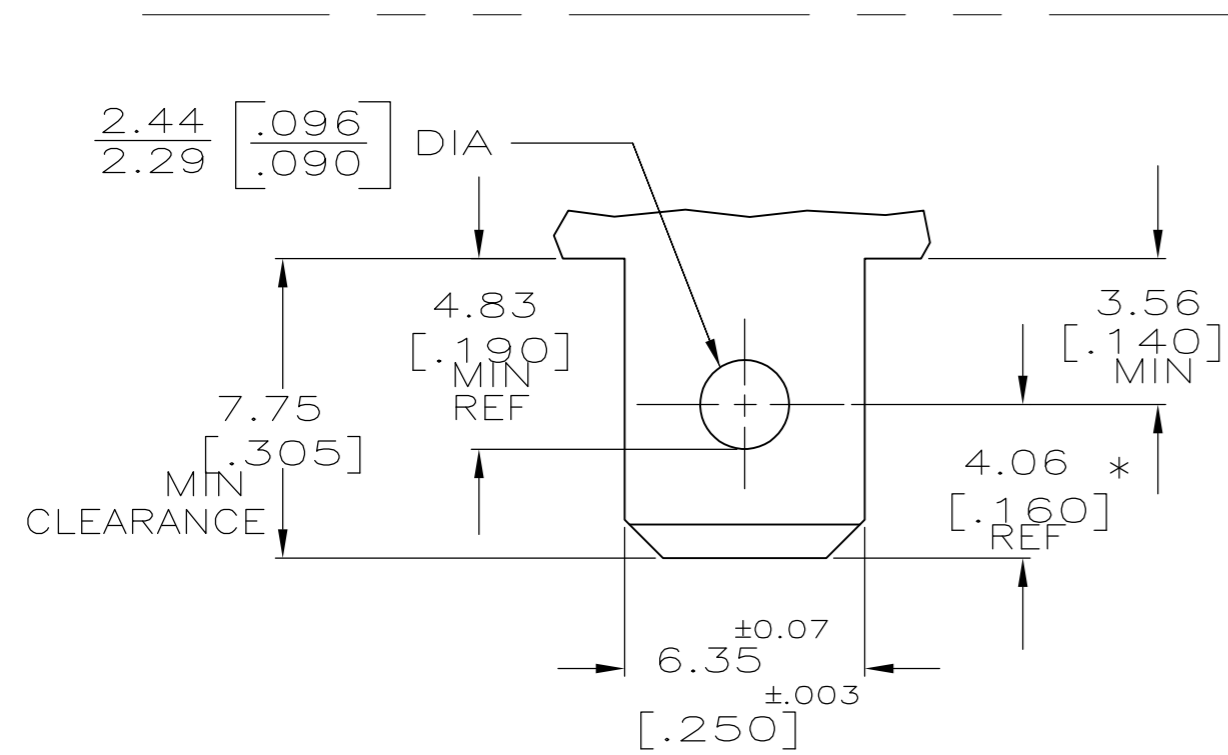
SECTION A-A
SCALE 8:1



SECTION B-B
SCALE 10:1



SECTION C-C
SCALE 10:1



RECOMMENDED MATING TAB

MAT'L: 1/2 H BRASS OR NICKEL PL STL

* TO BE USE ONLY WHEN SHOULDER IS ELIMINATED

2.29-3.30 [.090-.130]	0.8-2.0mm ² [18-14]	0.81 [.032]	63541-1
INSUL RANGE	WIRE SIZE	MATING TAB THK ±.001	PART NO

0	3.56 [.140]	5.59 [.220]	F	3.30 [.130]	1.75 [.069]	2.0mm ² [14]
					1.55 [.061]	1.3mm ² [16]
					1.42 [.056]	0.8mm ² [18]
TYPE	WIDTH	STRIP LENGTH ±.015	TYPE	WIDTH	±.051 [±.002] HEIGHT	WIRE
INSUL BARREL CRIMP			WIRE BARREL CRIMP			

THIS DRAWING IS A CONTROLLED DOCUMENT.

DIMENSIONS: mm [INCHES]

TOLERANCES UNLESS OTHERWISE SPECIFIED:

0 PLC	± -
1 PLC	± -
2 PLC	± -
3 PLC	± 0.25 [.010]
4 PLC	± -
ANGLES	± -

MATERIAL: BRASS FINISH: TIN

APPROVALS:

DWN	JR RUTH	6/27/89
CHK	P FORTNEY	6/27/89
APVD	J GILLESPIE	6/27/89

PRODUCT SPEC: - APPLICATION SPEC: - WEIGHT: -

TE Connectivity

RECPT., FASTON, FLAG, REVERSIBLE, LOCK-ON, 6.35 [.250] SERIES

SIZE: A2 CAGE CODE: 00779 DRAWING NO: C-63541 RESTRICTED TO: -

CUSTOMER DRAWING SCALE: 5:1 SHEET: 1 OF 1 REV: F